

Initial Assessment

NUMERACY

Version 1



No calculator



For office use only

Total Score

Level

Name

These questions will be read to you.

$2 + 2 =$

$5 - 3 = \underline{\hspace{2cm}}$

5

2

8

1

1 $8 + \text{————} = 8$

8 16 4 0

2 $8 + 2 - 3 = \text{————}$

13 8 7 10

3 $10p - 2p - \text{————} - 1p = 5p$

1p 2p 5p 10p

4 $2p + 2p + 1p = \text{[]} p$

5 $10p - 5p = \text{[]} p$

6 $5 + 3 = 0 + \text{[]}$

7 $\text{[]} + 6 = 8$

8 $10 - \text{[]} = 6$

9 $4 + 1 + \text{[]} = 10$

10 $\text{[]} + 6 = 10$

11 I buy two cinema tickets.



How much change will there be from £10?

£4.00 £3.00 £6.00 £16.00

12 $75 + 15 - 5 = \text{————}$

85 75 95 65

Total

13

$6 \times \underline{\hspace{2cm}} = 12$

- 12 6 18 2

14

$3 \times \boxed{\hspace{2cm}} = 5 + 5 + 5$

15

Half ($\frac{1}{2}$) of 14 =

16

$4 \times 5 = \boxed{\hspace{2cm}}$

17

$75 - 15 = \boxed{\hspace{2cm}}$

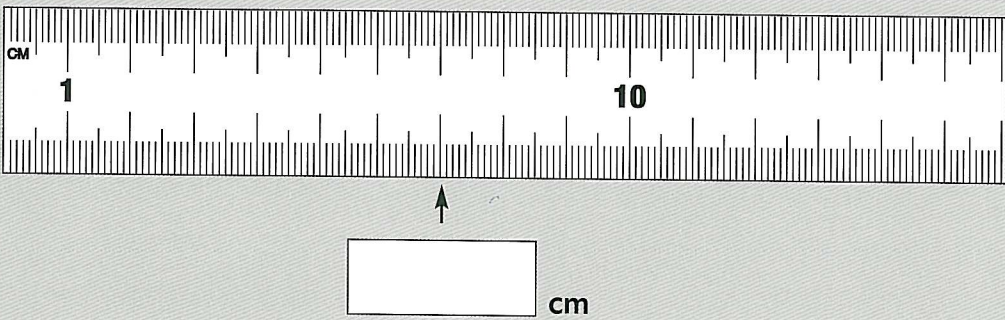
18

0, 2, 4, , 8, 10

19



20



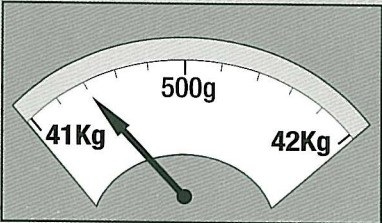
21

18, 21, 24, , 30

22

Round this number up or down to the nearest hundred. 270

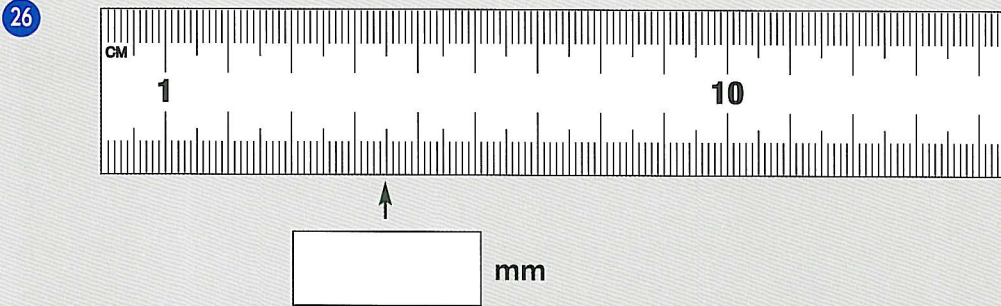
23



Weight = kg g

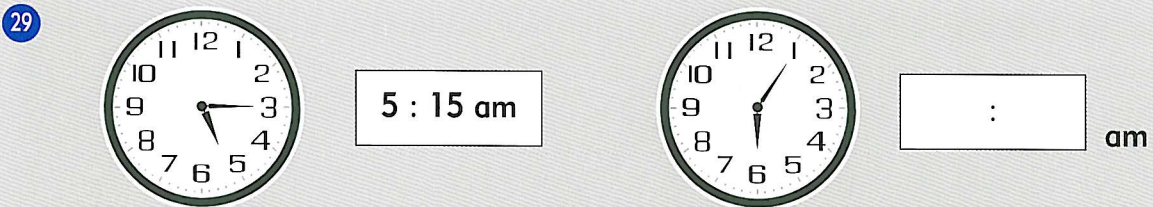
24 $\frac{1}{2} = \boxed{\frac{\quad}{10}}$

25 $5 \times \boxed{\quad} = 10 \times 2$



27 Drinks in a café cost £2.90. What is the change from £5? £

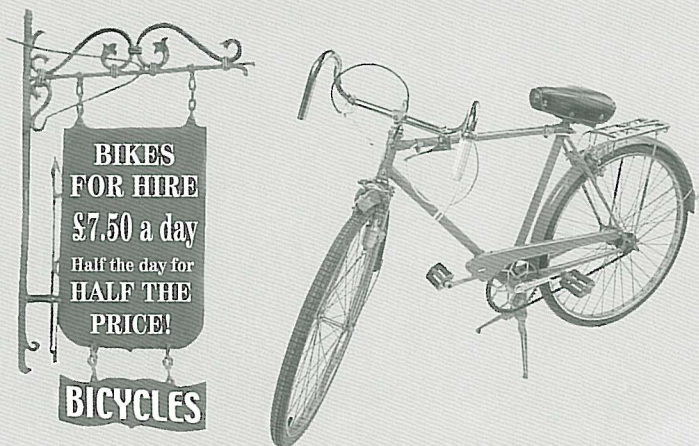
28 $56 \div 4 = \boxed{\quad}$



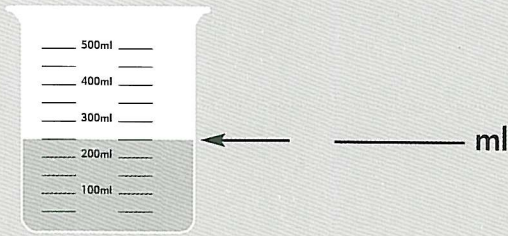
30 $35p = \text{£} \underline{\hspace{2cm}}$ £35.00 £03.5 £0.35 £350

31 How much does it cost to hire a bike for half a day?

£3.25 £3.75 £14.50 £2.50



32



- 200ml 250ml 225ml 275ml

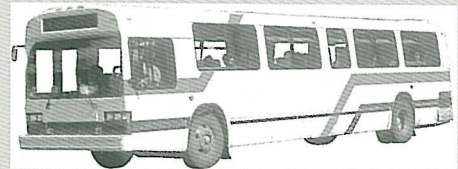
33

$$\begin{array}{r} 124 \\ + 499 \\ \hline \end{array}$$

- 632 623 513 375

34

There are 26 passenger seats on a bus. 2 people can sit on each seat. How many passengers are on the bus when all the seats are full?



- 28 52 78 42

35

$$\begin{array}{r} 551 \\ - 149 \\ \hline \end{array}$$

- 700 408 418 402

36

Which of these numbers shows forty four thousand, two hundred and six?

- 442,006 44,260 44,206 4,400,206

37

$$\frac{1}{2} = 50\% = 0.5 \quad \frac{1}{4} = 25\% = \underline{\hspace{2cm}}$$

- 0.25 0.225 0.55 2.5

38

How much is the settee in the sale?

- £180 £160 £40 £150

SALE
20% OFF
marked price



39

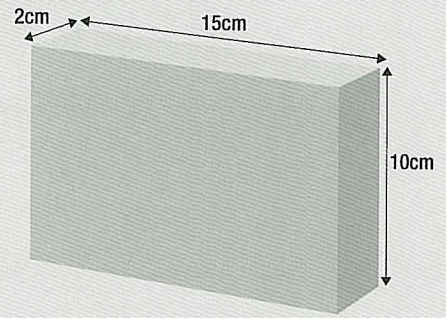
Which number is the smallest?

- 0.1 1.1 0.01 0.11


40

What is the volume of this box?

- 27cm³ 50cm³ 400cm³ 300cm³



41

	Aston	Long Hatton	Town Centre
Bus A	9.50	10.05	10.25
Bus B	10.30	10.45	11.05
Bus C	10.50	11.05	11.25
Bus D	11.30	11.45	12.05

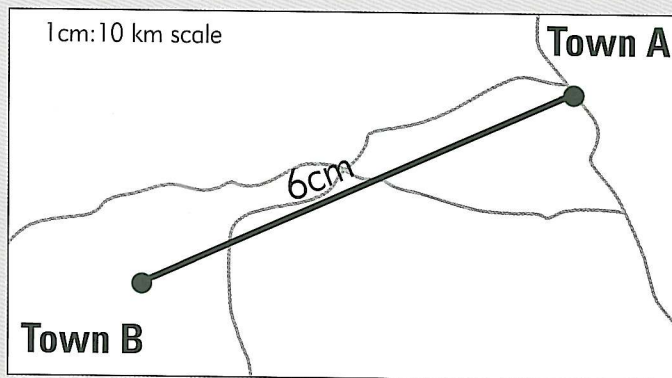
You live in Aston. You have an appointment in town at 11.30am. It takes 15 minutes to walk there from the town centre bus stop. Which is the latest bus you can catch to be there on time?

- Bus A Bus B Bus C Bus D

42

How far is it from Town A to Town B?

km



43

The temperature on Monday was 1°C. The next day it went down 3 degrees. What temperature was it on Tuesday?

°C

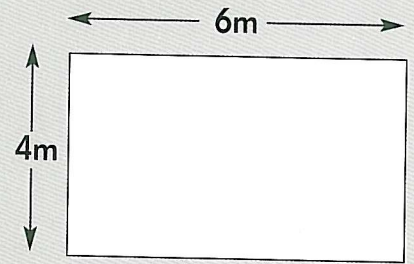


44

2.4 ÷ 10 =

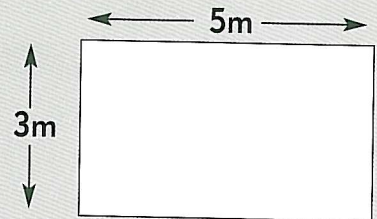
45

The area of the room is m².



46

The perimeter of the room is m.



47

John buys a car for £2,500. He uses 50% of the money in his bank account to buy the car. How much was in his account to start with?

£

48

Dan sold his house. He shared £60,000 equally between his 5 children.

How much did each child get? £

49

24 hour clock

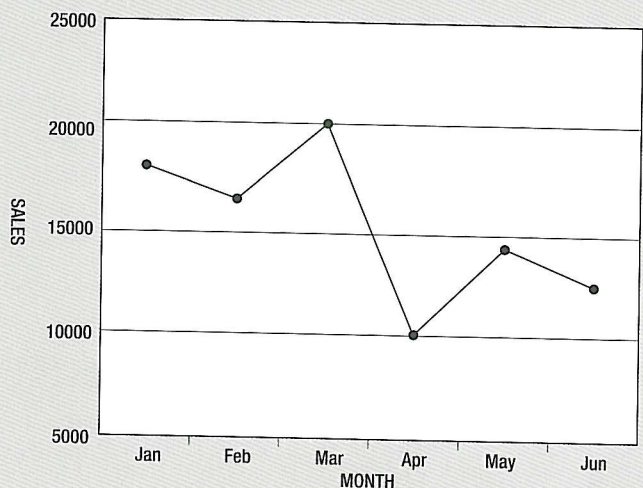
12 hour clock
 pm

50

What is the difference between the highest and lowest number of monthly newspaper sales?

newspapers

Newspaper sales



Total